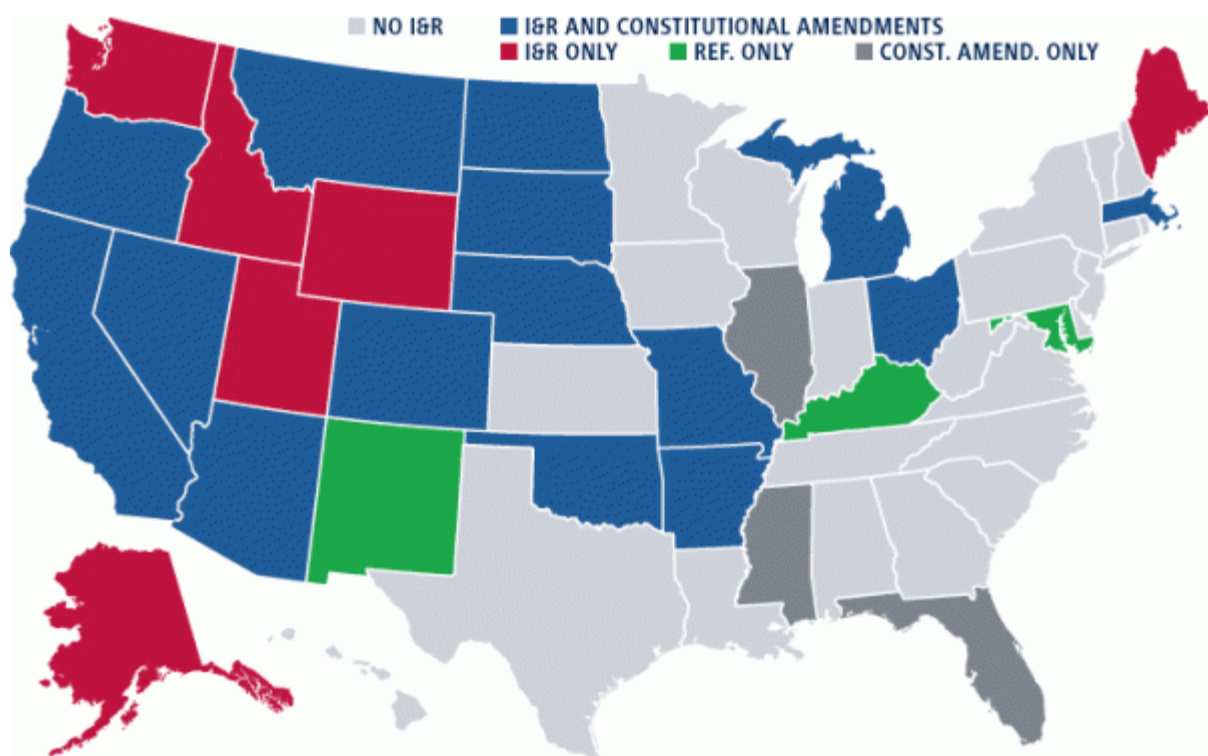


# Americans Want a Direct Say in Government: *Survey Results in All 50 States on Initiative & Referendum*



2050 Old Bridge Road ♦ Suite 103 ♦ Lake Ridge, VA 22192 ♦ (703) 492-1776  
[www.CitizensinCharge.org](http://www.CitizensinCharge.org) ♦ [www.CitizensinChargeFoundation.org](http://www.CitizensinChargeFoundation.org)

# Americans Want a Direct Say in Government

July 31, 2010

Citizens in Charge and Citizens in Charge Foundation jointly commissioned Pulse Opinion Research to conduct a poll in each of the 50 states between May 26 and July 19 of this year to determine public support for initiative and referendum.

Respondents in each state were asked this question:

***"In 26 states, citizens can sign a petition to put laws or constitutional amendments on the ballot to be decided by the voters at a statewide election. This process is known as initiative and referendum. Would you favor or oppose the initiative and referendum process in your state?"***

The results were clear across the country. **In every single state, Americans supported the initiative and referendum process by better than two-to-one margins.** In 48 of the 50 states, the margin of support was greater than three-to-one; in 40 of 50 states, citizens supported the initiative process by a four-to-one or greater margins.

Support was highest in South Dakota, where 79 percent favored initiative and referendum, compared to only 9 percent opposed. Support for initiative and referendum was lowest in Hawaii, though support still outnumbered opposition better than two-to-one with 58 percent in favor against 21 percent opposed.

South Dakota has a statewide process of initiative and referendum, while Hawaii does not. On average, support was higher in the 26 states with the initiative and/or referendum process than in the 24 states with neither statewide initiative nor referendum.

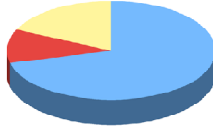
Each state survey had 500 respondents providing a margin of error of +/- 4.5 percentage points with a 95 percent level of confidence. The national average of these 50 state polls – containing a total of 25,000 respondents – was 67 percent in favor of initiative and referendum with 14 percent opposed and 19 percent not sure.

"Americans in every state want a direct say in their government," said Paul Jacob, president of Citizens in Charge and Citizens in Charge Foundation. "By whopping super-majorities the voters support initiative and referendum, but only roughly half the states have the process available to them."

## State by State Results

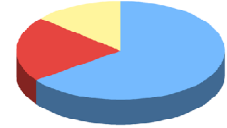
### Alabama

Favor 71%  
Oppose 11%  
Not Sure 18%



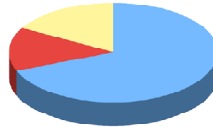
### Colorado

Favor 65%  
Oppose 21%  
Not Sure 14%



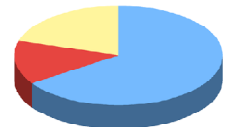
### Alaska

Favor 69%  
Oppose 14%  
Not Sure 17%



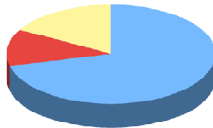
### Connecticut

Favor 65%  
Oppose 14%  
Not Sure 20%



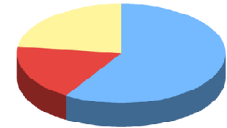
### Arizona

Favor 71%  
Oppose 12%  
Not Sure 17%



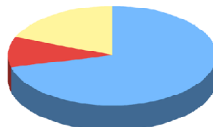
### Delaware

Favor 59%  
Oppose 18%  
Not Sure 23%



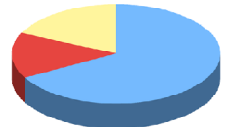
### Arkansas

Favor 71%  
Oppose 10%  
Not Sure 19%



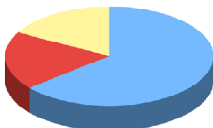
### Florida

Favor 67%  
Oppose 15%  
Not Sure 18%



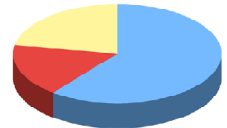
### California

Favor 64%  
Oppose 19%  
Not Sure 17%



### Georgia

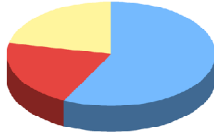
Favor 60%  
Oppose 17%  
Not Sure 22%



*Note: The sample size in each state is 500 respondents. The margin of sampling error is +/- 4.5 percentage points with a 95 percent level of confidence. See the memo on the last page for a more detailed explanation of the methodology.*

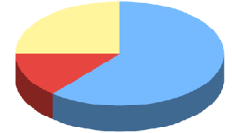
**Hawaii**

Favor 58%  
Oppose 21%  
Not Sure 22%



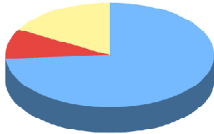
**Kansas**

Favor 61%  
Oppose 14%  
Not Sure 25%



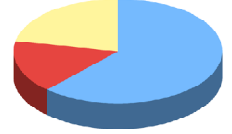
**Idaho**

Favor 74%  
Oppose 9%  
Not Sure 17%



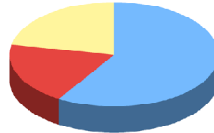
**Kentucky**

Favor 62%  
Oppose 16%  
Not Sure 22%



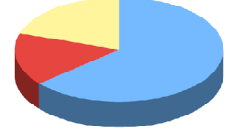
**Illinois**

Favor 59%  
Oppose 19%  
Not Sure 22%



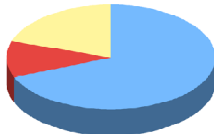
**Louisiana**

Favor 64%  
Oppose 16%  
Not Sure 20%



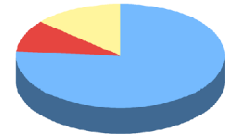
**Indiana**

Favor 69%  
Oppose 11%  
Not Sure 20%



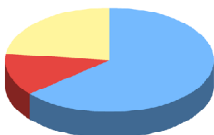
**Maine**

Favor 76%  
Oppose 10%  
Not Sure 14%



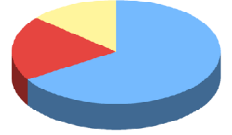
**Iowa**

Favor 64%  
Oppose 13%  
Not Sure 23%



**Maryland**

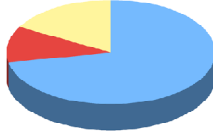
Favor 66%  
Oppose 20%  
Not Sure 14%



*Note: The sample size in each state is 500 respondents. The margin of sampling error is +/- 4.5 percentage points with a 95 percent level of confidence. See the memo on the last page for a more detailed explanation of the methodology.*

**Massachusetts**

Favor 72%  
Oppose 11%  
Not Sure 17%



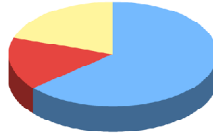
**Montana**

Favor 74%  
Oppose 10%  
Not Sure 16%



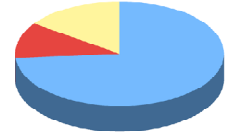
**Michigan**

Favor 64%  
Oppose 16%  
Not Sure 20%



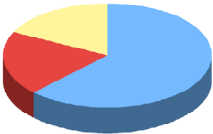
**Nebraska**

Favor 73%  
Oppose 11%  
Not Sure 15%



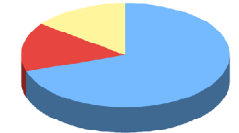
**Minnesota**

Favor 63%  
Oppose 20%  
Not Sure 18%



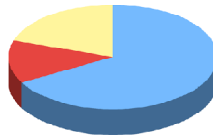
**Nevada**

Favor 70%  
Oppose 15%  
Not Sure 15%



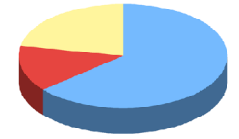
**Mississippi**

Favor 67%  
Oppose 13%  
Not Sure 20%



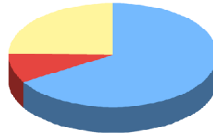
**New Hampshire**

Favor 64%  
Oppose 14%  
Not Sure 22%



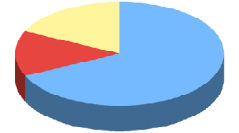
**Missouri**

Favor 67%  
Oppose 9%  
Not Sure 25%



**New Jersey**

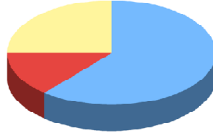
Favor 68%  
Oppose 14%  
Not Sure 18%



*Note: The sample size in each state is 500 respondents. The margin of sampling error is +/- 4.5 percentage points with a 95 percent level of confidence. See the memo on the last page for a more detailed explanation of the methodology.*

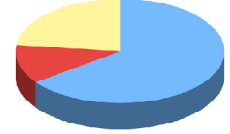
**New Mexico**

Favor 61%  
Oppose 14%  
Not Sure 25%



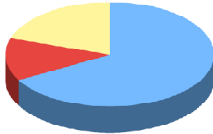
**Oklahoma**

Favor 65%  
Oppose 12%  
Not Sure 23%



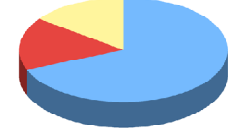
**New York**

Favor 67%  
Oppose 13%  
Not Sure 20%



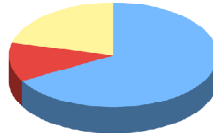
**Oregon**

Favor 69%  
Oppose 16%  
Not Sure 15%



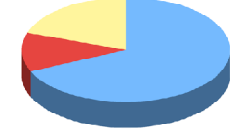
**North Carolina**

Favor 67%  
Oppose 12%  
Not Sure 21%



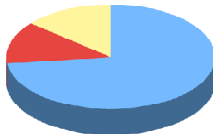
**Pennsylvania**

Favor 69%  
Oppose 12%  
Not Sure 20%



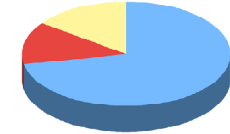
**North Dakota**

Favor 73%  
Oppose 13%  
Not Sure 14%



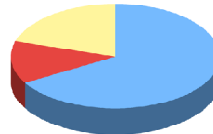
**Rhode Island**

Favor 72%  
Oppose 13%  
Not Sure 15%



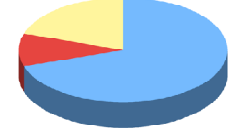
**Ohio**

Favor 66%  
Oppose 13%  
Not Sure 20%



**South Carolina**

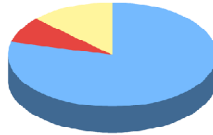
Favor 70%  
Oppose 10%  
Not Sure 20%



*Note: The sample size in each state is 500 respondents. The margin of sampling error is +/- 4.5 percentage points with a 95 percent level of confidence. See the memo on the last page for a more detailed explanation of the methodology.*

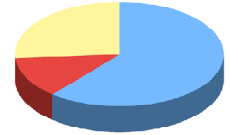
**South Dakota**

Favor 79%  
Oppose 8%  
Not Sure 13%



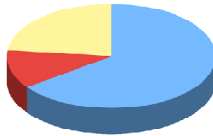
**Virginia**

Favor 61%  
Oppose 13%  
Not Sure 26%



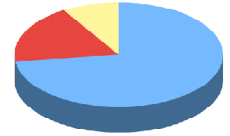
**Tennessee**

Favor 65%  
Oppose 12%  
Not Sure 23%



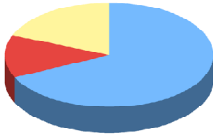
**Washington**

Favor 73%  
Oppose 18%  
Not Sure 9%



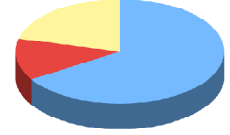
**Texas**

Favor 68%  
Oppose 13%  
Not Sure 19%



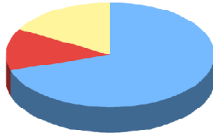
**West Virginia**

Favor 66%  
Oppose 13%  
Not Sure 21%



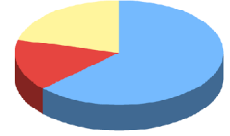
**Utah**

Favor 71%  
Oppose 13%  
Not Sure 17%



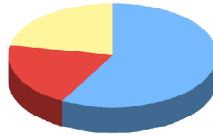
**Wisconsin**

Favor 63%  
Oppose 16%  
Not Sure 21%



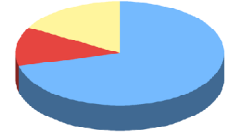
**Vermont**

Favor 58%  
Oppose 20%  
Not Sure 22%



**Wyoming**

Favor 71%  
Oppose 12%  
Not Sure 17%



*Note: The sample size in each state is 500 respondents. The margin of sampling error is +/- 4.5 percentage points with a 95 percent level of confidence. See the memo on the last page for a more detailed explanation of the methodology.*



To: Whom It May Concern  
Fr: Pulse Opinion Research  
RE: Survey Data  
Date: July 22, 2010

Between May 26 and July 19, 2010, Pulse Opinion Research conducted a telephone survey of 500 likely voters in all 50 states asking a standard question about the initiative process.

The margin of sampling error for the full sample is +/- 4.5% percentage points with a 95% level of confidence. This means that an identical survey conducted under the same circumstances would generate a result within the margin of sampling error 19 times out of 20.

There are other potential sources of error in any survey including question wording. Pulse Opinion Research did not develop the question for this survey.

The survey was conducted using an established automated polling methodology. Calls were placed to randomly-selected phone numbers through a process that insures appropriate geographic representation. After the calls are completed, the raw data is processed through a weighting program to insure that the sample reflects the overall population in terms of age, race, gender, political party, and other factors. The processing step is required because different segments of the population answer the phone in different ways. For example, women answer the phone more than men, older people are home more and answer more than younger people, and rural residents typically answer the phone more frequently than urban residents.

The population targets were based upon census bureau data, a series of screening questions to determine likely voters, and other factors. Pulse Opinion Research determines its partisan weighting targets through a dynamic weighting system that takes into account voting history, national trends, and recent polling.

Pulse Opinion Research does not comment on any survey work commissioned by clients. All media inquiries concerning the survey should be directed to Paul Jacob at (703) 492-1776 or [paul@citizensincharge.org](mailto:paul@citizensincharge.org).

For additional information, see [www.PulseOpinionResearch.com](http://www.PulseOpinionResearch.com)